

This rugged series has been widely used in Electric Power Plants, Machine Tools, Telephone Test Equipment, Railroad Signaling and Process Control Panels. The combination of a solid brass toggle cam and stainless steel roller bearing insures long and reliable mechanical service. Large silver contacts insure an electrical capacity well beyond published ratings.

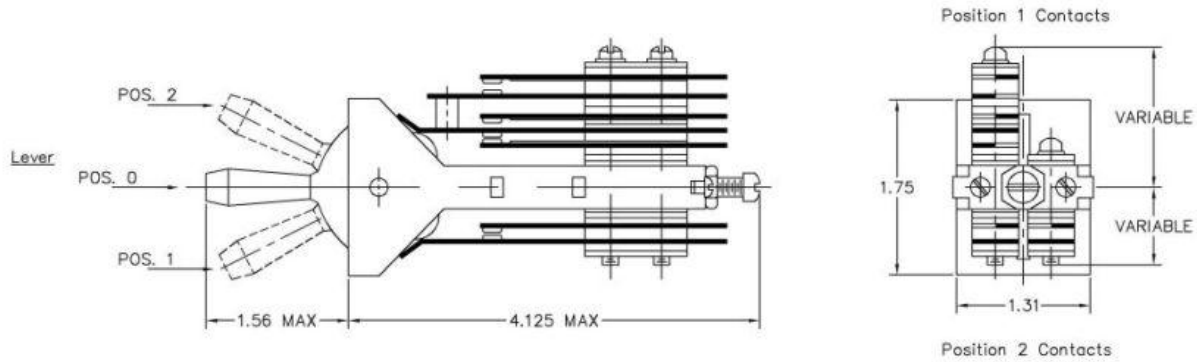
**Some of the main features of the Series 4100 switch include:**

- »Heavy Duty Construction
- »Up to 20 AMP Solid Silver Contacts
- »Thousands of Circuit Combinations
- »Locking and Non-locking versions
- »Custom levers for Remote Operation
- »Optional Rotary Operation
- »Adjustable operating lever pressure
- »Available in 2, 3, 4 or 5 position action
- »Up to 30 Circuits (S.P.S.T.) on one switch
- »Optional Screw Terminal Connection

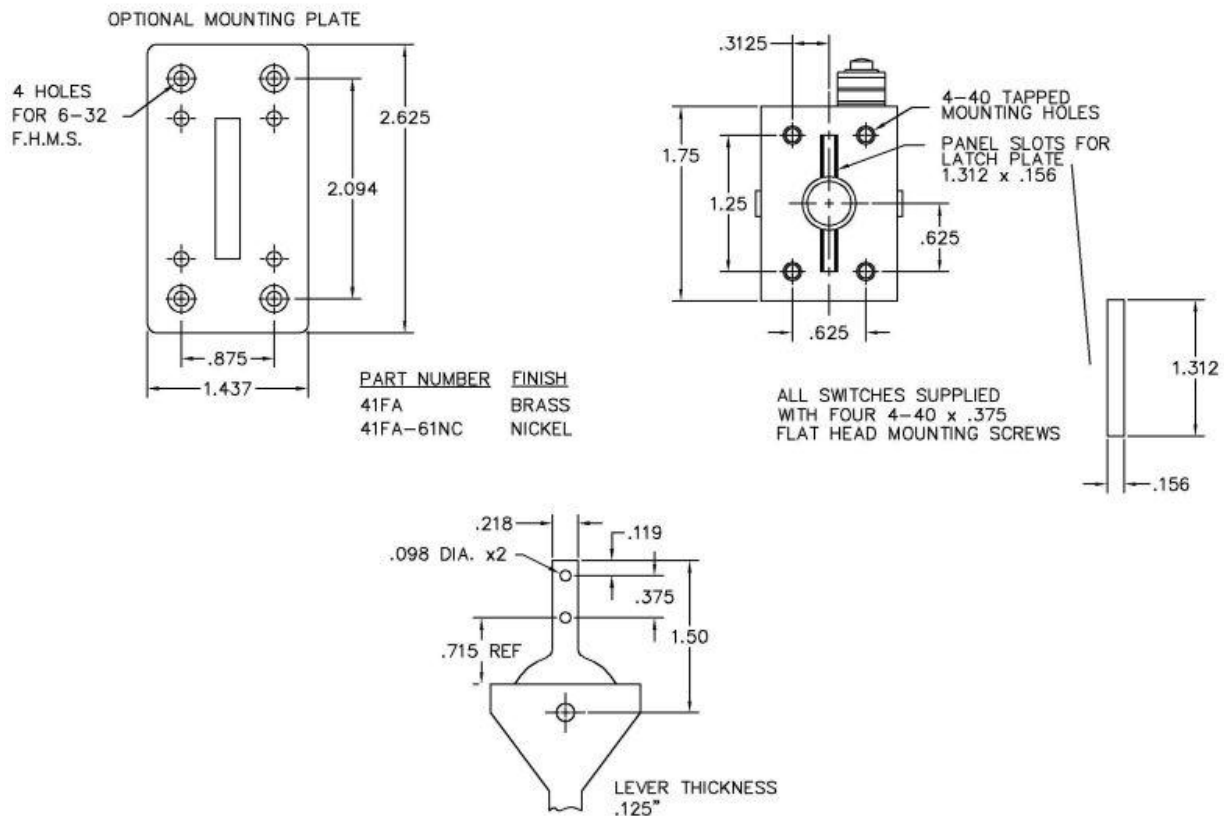
Electrical Characteristics	
Current and Voltage Ratings	10 Amps at 125 VAC (resistive) 20 Amps at 125 VAC (resistive)
Dielectric Strength	1000 VAC min. live metal to ground
Mechanical Specifications	
Life	50,000 cycles min.
Contacts	Standard Duty 10 Amp Fine Silver .187 dia. X .031 Thick Head Heavy Duty 20 Amp Coin Silver .312 dia. X .047 Thick Head
Temperature	-20°C to +100°C -4°F to +212°F
Lever Stops	Non Locking (NL- momentary - set at factory) No Throw (NT- used on 1/2 throw switches - set at factory)
Operating Force	4 to 12 lbs depending on adjustment pressure and the number of circuits being activated (can be adjusted by user)
Material and Finishes	
Frame	Brass with Brite Nickel Plating
Cam	Brass with Brite Nickel Plating, Type 303 Stainless Steel Axel and Stop Pins
Rollers	Thermoplastic
Handle	Black Delrin Standard - Other colors available upon request
Insulation	Between blades - Nema XXX Paper Reinforced Phenolic Resin Laminate (meets MIL - P3115 type PBE - P) Over screws - Grade XK Concentric Laminate Paper Base Phenolic Tubing (meets JAN-P-13 [NAVY Spec 17-P-S])
Piston Assembly	Type 303 Stainless Steel Pistion, Roller, Axel and Stainless Piston Spring
Spring Blades	Phosphor Bronze with Commercial Nickel Plating
Stack Screws	Steel with Zinc Plating
<i>Information accurate as of December 12th, 2012</i>	

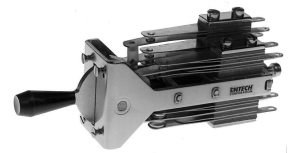


### Dimensions

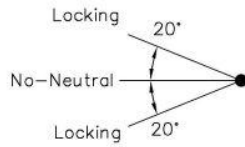


### Mounting

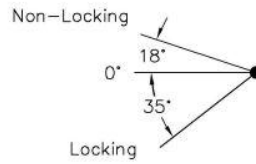




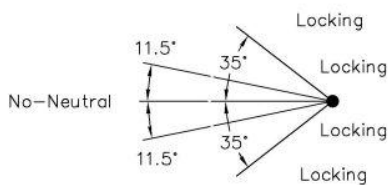
### Lever Action and Degree Throw



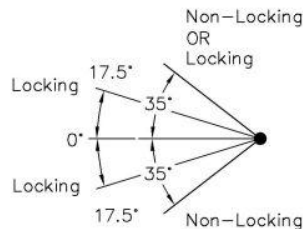
2 Position  
Series 4102



3 Position  
Series 4103

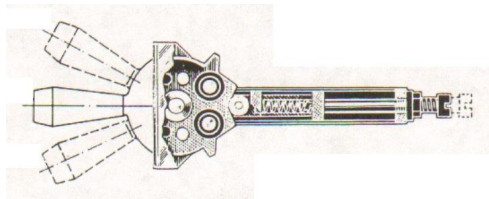


4 Position  
Series 4104



5 Position  
Series 4105

### Internal Operating Construction



### Cam Code Table

SERIES SWITCH	4102		4103				4104								4105																							
	2 POS		3 POS				4 POS								5 POS																							
CAM CODE	1	2	3	4	5	6	7	8	9	10	11	12	13	14	15	16	17	18	19	20	21	22	23	24	25	26	27	28	29	30	31	32	33	34	35	36		
	L	L	L	L	L	NL	NL	L	L	L	L	L	L	L	L	L	L	NL	NL	NL	L	L	L	NL	NL	NL	L	L	NT	NT	L	L	L	L	L	L	L	
	L	NL	L	L	L	L	L	L	L	L	L	L	L	L	L	L	L	NL	NL	NL	NL	NL	NL	L	L	L	L	L	L	L	L	NL	NL	NL	L	L	L	
			L	NT	NL	NL	NT	L	L	L	NL	NL	NL	NT	L	L	L	L	L	L	L	L	L	L	L	L	L	L	L	L	L	L	L	L	L	L	L	
							L	NT	NL	L	NL	NT	NT	L	L	NT	NL	NL	NT	NL	NL	NT	L	L	NT	NL	NL	NL	NL	NL	NL	NL	NT	NL	NL	L	NT	NL
															L	NT	NT	NL	NT	NT	L	NT	NT	NL	NT	NT	NL	NT	NL	NT	NL	NT	NT	L	NT	NL		

### Contact Forms Available

