



The Series 4700 provides the convenience of single hole panel mounting and small overall size. While used primarily in Electronic Test and Medical Equipment, this Series is often specified for Telecommunications applications involving complex circuit switching.

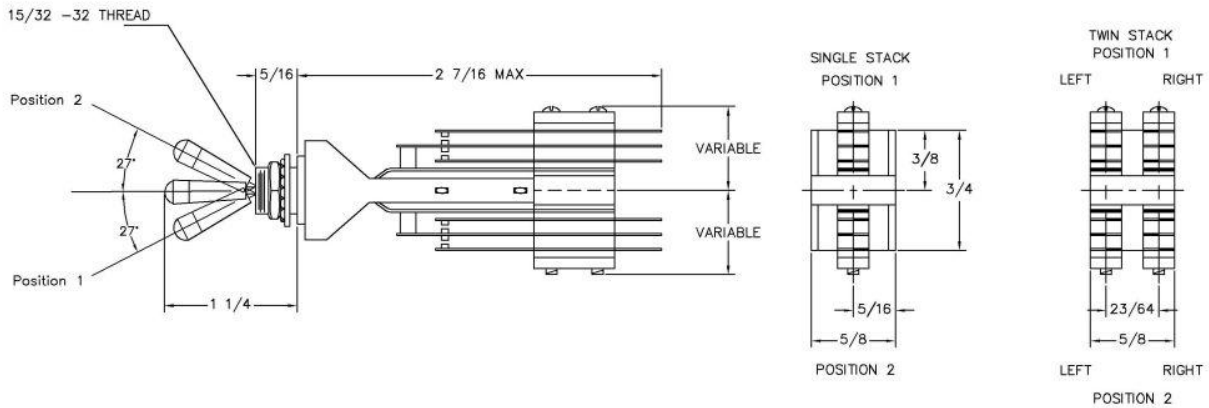
Some of the main features of the Series 4700 switch include:

- »Up to 16 independent A Form circuits per switch
- »High Density Circuit Capability
- »Contact Ratings from dry circuit to 10 Amps at 125 VAC
- »Rugged brass frame with anti-pull bushing design
- »Mounts in panels from .050" to .125"
- »Optional bifurcated contacts available for redundancy in critical low voltage/cycle applications

| Electrical Characteristics | |
|---|---|
| Current and Voltage Ratings | 3 Amps at 125 VAC (resistive) [Standard] 5 Amps at 125 VAC (resistive), Dry Circuit [Optional] 10 Amps at 125 VAC (resistive), Dry Circuit [Optional] |
| Dielectric Strength | 500 VAC min. live metal to ground |
| Mechanical Specifications | |
| Life | 100,000 cycles electrical 400,000 cycles mechanical |
| Contacts | 3 Amp Welded Solid Palladium - .050" dia. X .020" thick head [Standard] Dry Circuit - Compound Hard Gold - .050" dia. X .020" thick head [Optional] 5 Amp Welded Solid Palladium - .078" dia. X .035" thick head [Optional] 10 Amp Staked Solid Fine Silver - .187" dia. X .031" thick head [Optional] |
| Temperature | -20°C to +85°C -4°F to +184°F |
| Mounting | Includes one 15/32" hexnut, lock washer and flat washer |
| Operating Force | 2 to 4 lbs depending on the number of circuits being activated |
| Material and Finishes | |
| Frame | Brass with Commercial Nickel Plating - Insert Molded Steel/Thermoplastic Base Assembly |
| Toggle | Brass with Stainless Split Pin Axel and Nylon Rollers |
| Handle | Black Delrin Standard - Other colors available upon request |
| Insulation | Between blades - Nema XXX Paper Reinforced Phenolic Resin Laminate (meets MIL-P3115 type PBE-P) Over screws - Nomex/Mylar Tubing |
| Detent Assembly | Formed Nickel Silver Lifters and Nylon Rollers |
| Spring Blades | Nickel Silver with Solder Lugs, pre-tinned for ease in wiring Optional Quick Connect Taper Tab Terminals |
| Stack Screws | Steel with Zinc Plating |
| <i>Information accurate as of December 12th, 2012</i> | |



Dimensions

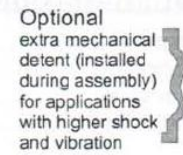
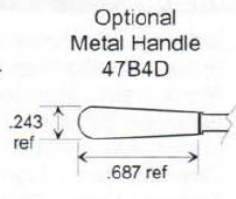
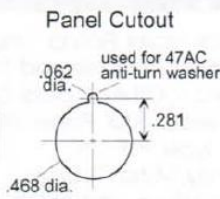
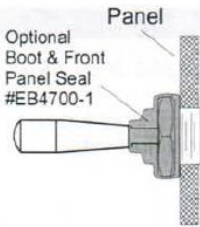
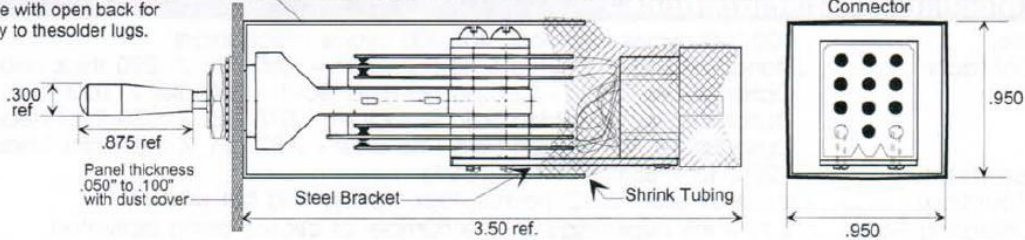


Mounting

Illustrated with Dust Cover and 10 pin male coupler. Also available with open back for wiring directly to the solder lugs.

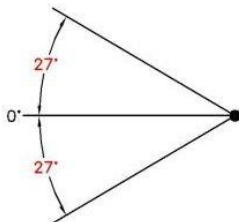
Optional Dust Cover, .020" aluminum - contact factory regarding limitations on contact configurations when enclosed in dust cover.

Rear View Optional Male Connector

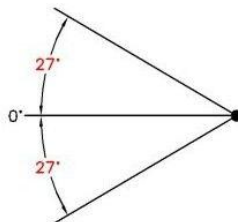


Lever Action and Degree Throw

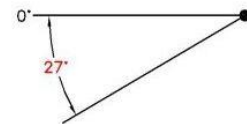
NON-LOCKING



LOCKING

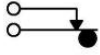


HALF THROW

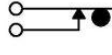




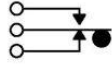
Contact Forms Available



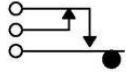
A



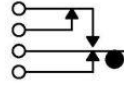
B



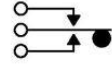
C



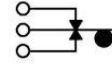
D



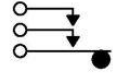
E



F



G



H