



The Entech Series 5400 is a High Contact Density Family of turn switches. Either single or double sets of contact spring pile-ups may be mounted on both sides of the frame resulting in extensive circuit switching capability.

This frame assembly is available in either 45° or 90° maintained (latching) action. Optional enclosures include a metal or plastic dust cover with or without a plug connector. Please contact the factory for further details and the circuits that can be used with these enclosures.

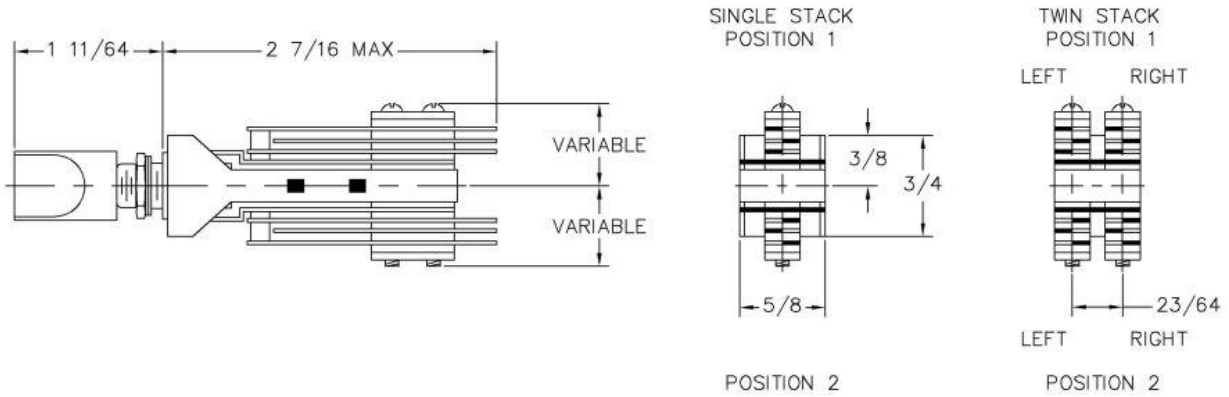
**Some of the main features of the Series 5400 switch include:**

- »High density circuit capability - up to 20 independent A Form circuits per switch
- »Contact ratings from dry circuit to 5 Amps at 125 VAC (resistive)
- »Rugged brass frame with anti-pull-through bushing design
- »Mounts in panels from .050" to .250" and a variety of Mosaic Grid & Tile Systems
- »Optional bifurcated contacts available for redundancy in critical low voltage/cycle applications

Electrical Characteristics	
Current and Voltage Ratings	3 Amps at 125 VAC (resistive) [Standard] 5 Amps at 125 VAC (resistive), Dry Circuit [Optional]
Dielectric Strength	500 VAC min. live metal to ground
Mechanical Specifications	
Life	100,000 cycles electrical 500,000 cycles mechanical
Contacts	3 Amp Welded Solid Palladium - .050" dia. X .020" thick head [Standard] Dry Circuit - Compound Hard Gold - .050" dia. X .020" thick head [Optional] 5 Amp Welded Solid Palladium - .078" dia. X .035" thick head [Optional]
Temperature	-20°C to +85°C -4°F to +184°F
Mounting	Includes one 3/8" hexnut, lock washer and flat washer
Operating Force	1 to 3 lbs depending on the number of circuits being activated
Material and Finishes	
Frame	Brass with Commercial Nickel Plating - Insert Molded Steel/Thermoplastic Base Assembly
Shaft	Brass with 303 Stainless Cam Pin
Button	Black Delrin Standard - For other colors, styles and engraving, contact the factory
Insulation	Between blades - Nema XXX Paper Reinforced Phenolic Resin Laminate (meets MIL-P3115 type PBE-P) Over screws - Nomex/Mylar Tubing
Detent Assembly	Formed Nickel Silver Lifters and Nylon or Delrin Rollers
Spring Blades	Nickel Silver with Solder Lugs, pre-tinned for ease in wiring Optional Quick Connect Taper Tab Terminals
Stack Screws	Steel with Zinc Plating
<i>Information accurate as of December 12th, 2012</i>	



### Dimensions

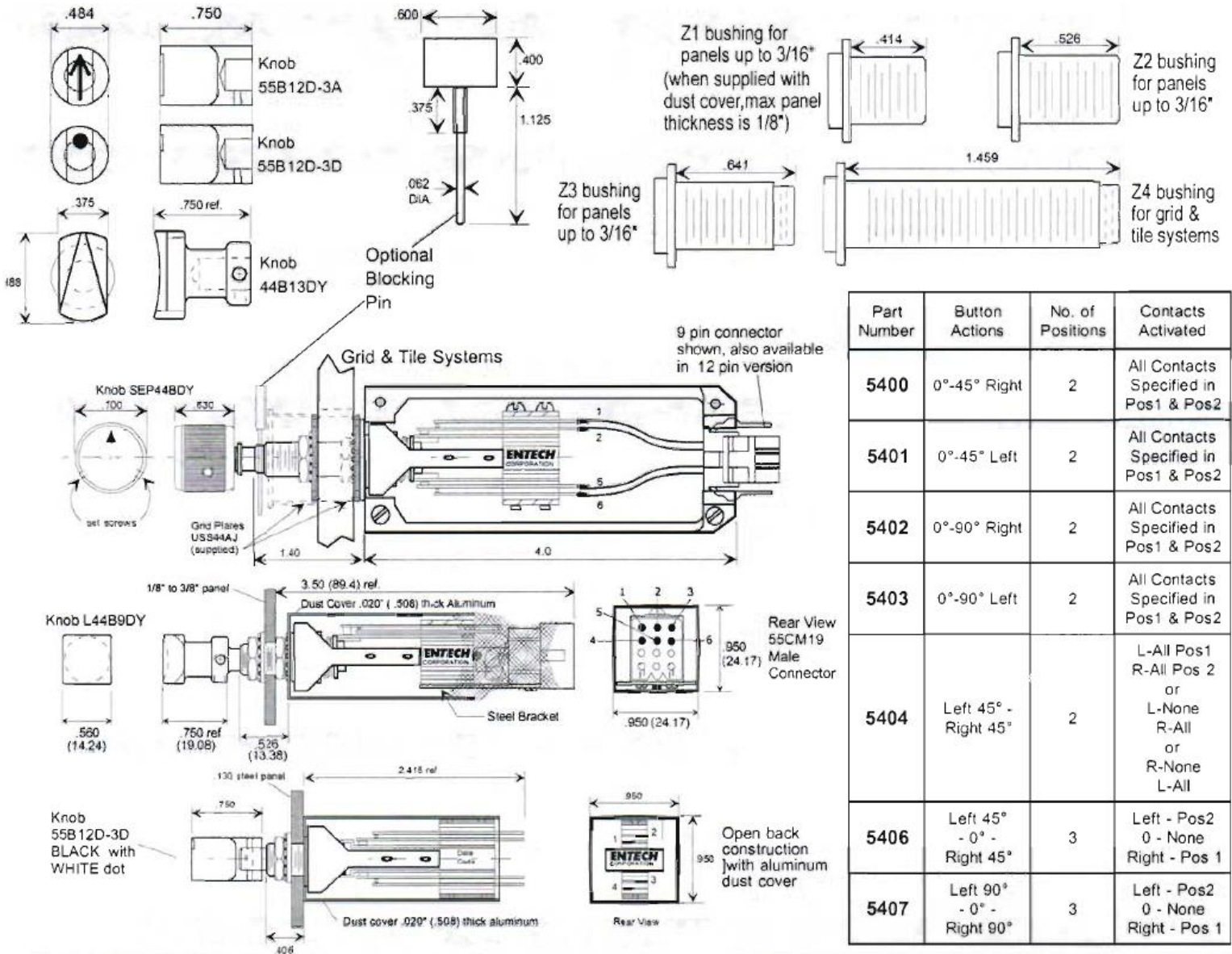


### Series Chart

Part Number	Button Actions	No. of Positions	Contacts Activated
5400	0°-45° Right	2	All Contacts Specified in Pos1 & Pos2
5401	0°-45° Left	2	All Contacts Specified in Pos1 & Pos2
5402	0°-45° Right	2	All Contacts Specified in Pos1 & Pos2
5403	0°-45° Left	2	All Contacts Specified in Pos1 & Pos2
5404	Left 45° - Right 45°	2	L - All Pos1 R - All Pos2 or L - None R - All or R - None L - All
5405	Left 45° - 0° - Right 45°	3	Left - Pos2 0 - None Right - Pos1
5406	Left 90° - 0° - Right 90°	3	Left - Pos2 0 - None Right - Pos1



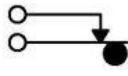
### Mounting



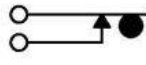
Part Number	Button Actions	No. of Positions	Contacts Activated
5400	0°-45° Right	2	All Contacts Specified in Pos1 & Pos2
5401	0°-45° Left	2	All Contacts Specified in Pos1 & Pos2
5402	0°-90° Right	2	All Contacts Specified in Pos1 & Pos2
5403	0°-90° Left	2	All Contacts Specified in Pos1 & Pos2
5404	Left 45° - Right 45°	2	L-All Pos1 R-All Pos 2 or L-None R-All or R-None L-All
5406	Left 45° - 0° - Right 45°	3	Left - Pos2 0 - None Right - Pos 1
5407	Left 90° - 0° - Right 90°	3	Left - Pos2 0 - None Right - Pos 1

Contact Forms Available

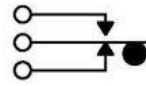
Series 5400  
Turn Switch



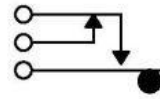
A



B



C



D